

hôtel palafitte

NEUCHÂTEL SWITZERLAND

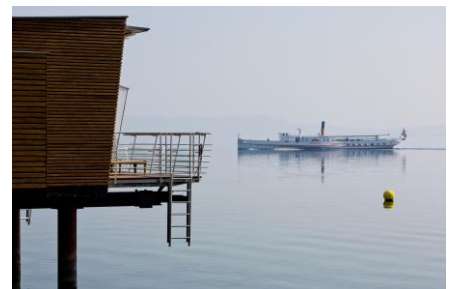
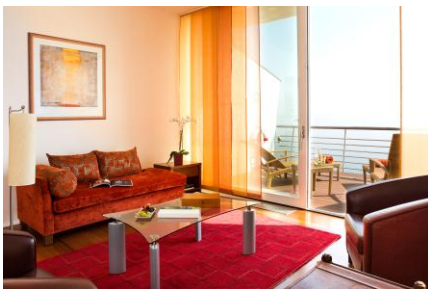
Situation

The only hotel in Europe built on stilts, the Palafitte enjoys an exceptional setting. To put one foot into this unique and unusual establishment is to dive into a cocooning and relaxing environment. This is a complete and instant change of scenery. The architecture has been carefully designed to enhance the breathtaking surrounding view from any point in the room!



Accommodation

Each of the 24 pavilions built on stilts has an individual bedroom, a bathroom with movable partitions that allow a view onto the lake from the bath tub, a separate toilet, an office corner and a large terrace with only the neighbouring Alps to block the horizon.



FACILITIES

Plasma screen television
Free Wi-Fi
Office corner

Telephone
Nespresso coffee machine
Minibar

Bulgari Thé Vert toiletries
Guest bed
Beach towels

Restaurant

“La Table de Palafitte” favours local market produce with a menu which follows the seasons. Totally encased in large French windows, the restaurant opens onto the sumptuous surrounding nature with the terrace as the only barrier.

Chef David Sauvignet took over the reins in the kitchen since March 3, 2015. He continues his successful career and brings his expertise on the banks of Neuchâtel. The restaurant “La Table de Palafitte” has won 14 points in the Gault & Millau guide in October 2015.



LIFESTYLE™
Preferred
HOTELS & RESORTS

hôtel palafitte

NEUCHÂTEL SWITZERLAND

Le Bar

Le Bar is a meeting place for morning coffee, an indulgent afternoon tea or an after dinner drink the evening. The menu is varied and extensive.

Lovers of local tradition will be pleased to find an absinth fountain to enjoy the drink in the authentic way of the Neuchâtel region.



Conference

The Hotel Palafitte is a beautiful setting for business meetings. The small scale and position of the hotel, nestled between the lake and the surrounding nature, makes it an ideal venue for holding a seminar in a calm setting. The tranquility of the place encourages productive thinking.



Chaumont Room

Up to 50 persons
Theatre 40 persons
Classroom 30 persons
U- Shape 25 persons
Boardroom 20 persons

Leisure

Its unique location gives it the status of the hotel enjoying the largest natural pool in Switzerland!

Possible sports and water activities such as: sailing, paddle, boat hire, cycling, golf or hiking.

Boat rental and available bikes at the reception.

Cultural activities: Museum of Archaeology, the Laténium, Clock Museum, exceptional natural sites (Creux du Van on the picture).



Parking

Free parking place - 40

Credit cards

American Express
Diners Club
Master Card
VISA
JCB

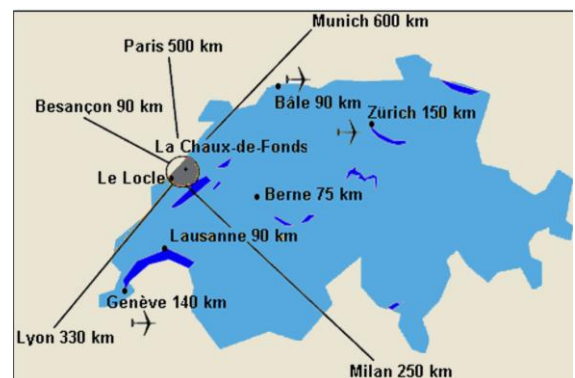
Access plan

ARRIVING BY TRAIN

From Geneva: 1h15
From Lausanne: 45 minutes
From Zurich: 1h30
From Paris: 4h05

ARRIVING BY AIR

Geneva-Cointrin airport: 1hr 20 minutes
Zurich-Kloten airport: 1hr 40 minutes



Contacts

General Manager
Director of Sales & Marketing
Deputy Director

Yves Chavallaz
Odile Vogel Reynaud
Paul Gibson

e. y.chavallaz@brp.ch
e. o.vogel@brp.ch
e. p.gibson@palafitte.ch

LIFESTYLE™

Preferred
HOTELS & RESORTS

CH - 2008 Neuchâtel - T. +41 32 723 02 02 - F. +41 32 723 02 03
reservation@palafitte.ch - www.palafitte.ch