



RIFFELALP RESORT 2222M, ZERMATT **BREATHTAKING COUNTRYSIDE, STUNNING** **VIEW OF THE MATTERHORN AND HEALTHY** **MICROCLIMATE**

300 DAYS' SUNSHINE A YEAR MEANS THAT GLORIOUS WEATHER IS ALL BUT GUARANTEED. FROM THE PATIO OF THE RIFFELALP RESORT – AND FROM MOST OF THE ROOMS – YOU HAVE A DIRECT, UNHINDERED VIEW OF THE MATTERHORN, SWITZERLAND'S MOST FAMOUS LANDMARK. IF YOU THOUGHT THE TRANQUILITY OF PEDESTRIANIZED ZERMATT WAS A BREATH OF FRESH AIR, TRY COMING UP HERE!

YOUR ARRIVAL

Even the way you get here – by rack railway – is unique. The Riffelalp Resort porter awaits you down in the village, takes care of your luggage, sorts out all the ticket formalities and accompanies you to the Gornergrat railway train to ride up the mountain. The powerful but surprisingly quiet train works its way up past craggy rocks, gnarled pine trees and diminutive waterfalls.

Our history

The Grand Hotel Riffelalp celebrated its grand opening for summer tourism on 10th July 1884 and quickly became a playground for Europe's high society. Today, Riffelalp Resort continues that great tradition with all the comforts of a modern ***** hotel.

1st September 1856

First Riffelalp plot purchased by Alexander Seiler

1878 – 1884

Construction of the 150-bed Riffelalp Grand Hotel

10th July 1884

Inauguration of the Grand Hotel for summer tourism; it soon became “the playground of European high society”

1890

Capacity of Riffelalp Grand Hotel increased to 200 beds, and several years later to 280 beds following acquisition of two annexe buildings

13th July 1899

Opening of the Riffelalp tram, the shortest and highest tramway of Europe

February 1961

Main building completely destroyed by fire

1986 – 1988

Alterations carried out to the two annexe buildings prior to the launch of 40-bed «Berghotel Riffelalp» and «Alpenresidenz Augstkumme» with holiday apartments

1988 – 1998

Riffelalp again opens to visitors

1998 – 2000

New construction and alteration scheme for the present «Riffelalp Resort 2222 m», offering all the services and amenities of a modern five-star hotel. Restoration of the tramway (highest in Europe) linking «Riffelalp Resort 2222 m» to the local station (in summer only)

2003

Enlargement of the wellness area annexe of the suite building

2007

Opening of the Ristorante «Al Bosco»

2016

General renovation of the whole hotel

Building of Deluxe ski room

Autumn 2017

Renovation of the Restaurant Alexandre, Banquet room, Bar and the Smoker's Lounge



An experience in itself, the journey is over all too quickly. And as you alight from the train, it feels like you have left the cares of the world behind you. Here again, the porter takes care of everything, leaving you free to simply soak in the breath-taking countryside and phenomenal mountain panorama. A five-minute ride on Europe's highest-altitude tram – or an even quicker jaunt in a comfortable electric snowmobile in winter – is the last leg of the journey, preparing you for an unforgettable stay.

The relaxation begins on the sun-drenched patio, where a modest plaque notes the resort's membership of the exclusive Leading Hotels of the World. In the lobby, you run into dozens of sheep. Yes, you read that correctly. They just seem a bit...stiff somehow. Which they are: Fashioned from fur, wood and metal, they are actually a work of art that brings a smile to guests' faces.



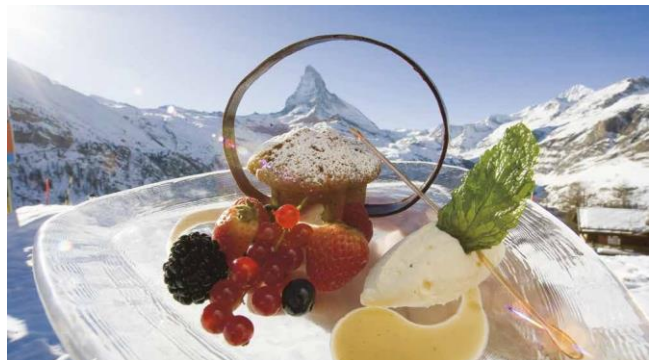


YOUR ACCOMMODATION

The first time you see it, the unhindered view of the Matterhorn from the luxurious rooms of the Five-Star Superior Hotel Riffelalp Resort literally takes your breath away. It takes a moment before you even notice the interior design, whose tasteful, modern elements are of a piece with the Alpine backdrop. Clad in natural stone walls, the spacious, elegantly appointed bath-rooms are the stuff of dreams.

YOUR ENJOYMENT

Two restaurants in summer and three in winter cater to every conceivable culinary desire. Italian fare is served at Al Bosco, gourmet cuisine at the Restaurant Alexandre. Either way, unforgettable enjoyment is guaranteed. The bar is the ideal place to bring the day to a fitting end. The service is impeccable, personable, amiable. Even first-time visitors feel like they are among friends. One highlight – especially if you are staying for any length of time – is the “Wine & Dine” package that includes access to all restaurants at the resort’s partner organizations, both up on the Riffelalp and down in Zermatt.



CHILDREN / FAMILIES

The Riffelalp Resort is the perfect place for families with children. Zermatt and the Riffelalp itself are completely car-free and the mountain slopes are gentle, so the kids are free to roam and play without any danger. Quite apart from the fact that the resort has its own kindergarten, with loving and professional care for your little ones during the winter.

RENOVATION

Since the Riffelalp was renovated from top to toe in 2016 and 2017, its five stars have shone even more brightly.

SUMMER ACTIVITIES

There is no end to the recreational possibilities in summer. Long walks and mountain bike tracks are a great way to fill up on fresh mountain air. The resort's fully qualified mountain guide organizes full-day tours three days a week – everything from easy hikes to assaults on 4,000-meter peaks. The nine-hole golf course in Randa is within easy reach of the Riffelalp Resort by Gornergrat rack railway and a short taxi ride. Paragliding and even sightseeing by helicopter are also on the menu. Cows began grazing on the Riffelalp meadows again in 2017. An Alpine cooperative was set up specially to uphold the tradition of pasture management and if everything goes according to plan, will launch its own cheese production within the next few years.





WINTER ACTIVITIES

In winter, of course, you can do anything and everything you would expect of a world-class winter sports resort like Zermatt. Downhill skiing, snowboarding and sledding, you name it:

There is just about nothing you can't do here. Best of all, you can ski out of the hotel and onto the piste, and then straight back in again. No searching for parking spaces, no transfers, no queuing for ski lifts. Just get togged up and off you go, returning to the hotel whenever you feel like it.

LOCATION

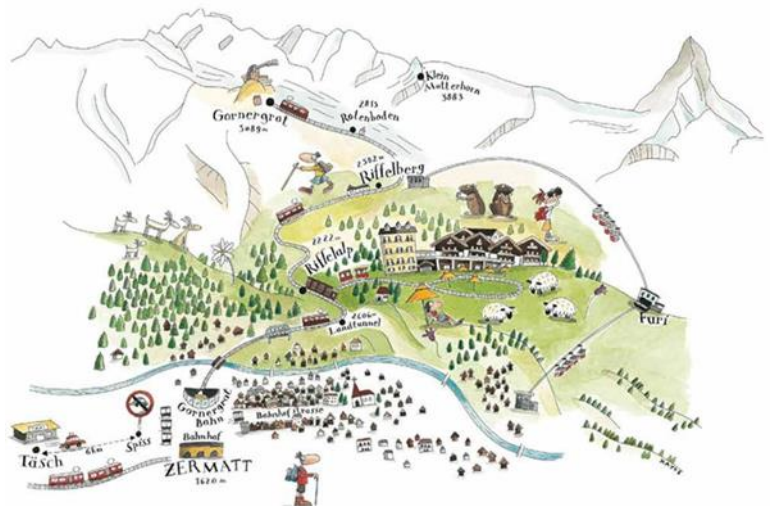
Situated 2,222 meters up in the mountains, the resort is right opposite the Matterhorn and commands a marvelous view of a truly stunning Alpine panorama. The plateau on whose south side the Riffelalp Resort is located also enjoys a favorably mild microclimate.

GETTING HERE

The most convenient way to get here is by train.

Our porter will be waiting for you at the station in Zermatt. He will take care of your luggage and give you the tickets. A few minutes later, the Gornergrat rack railway will bring you to the Riffelalp station, where the porter will again sort out your luggage.

It is also possible to arrange a convenient taxi service to Zermatt from any airport in Switzerland. And Air Zermatt even provides helicopter transfers. Our concierge will be happy to help out and advise you.



NUMBER OF ROOMS

5 single rooms, 50 double rooms, 10 junior suites and 5 suites

RESTAURANTS

- Restaurant Alexandre: Gourmet restaurant
- Ristorante Al Bosco: Elegant Italian restaurant with a spacious sundeck
- facing the Matterhorn
- Restaurant Walliserkeller: Regional cuisine prepared over an open fire, authentic specialties such as cheese fondue, raclette and meat prepared on soapstone
- (open only in winter)
- Bar: Snug place with piano music
- Vinothek: Wine cellar for tastings and social gatherings (open only in winter)

The “Wine & Dine” package laid on by our partners in Zermatt also gives you the chance to enjoy half-board at the town’s assorted restaurants.

SPA 2'222m

- Spacious indoor pool with a whirlpool
- Europe’s highest-altitude outdoor pool facing onto the Matterhorn (approx. 35 °C)
- Steam bath, Finnish sauna, hot stone bath, Chriiter grotto, organic sauna
- Sundeck, relaxation room, mini-fitness room, solarium, massages





OTHER FACILITIES

- Table tennis and table football
- Bowling
- PlayStation and Wii
- Kindergarten
- Smoking lounge
- Billiard room
- Bar

MEMBERSHIPS

- Sandoz Foundation Hotels
- The Leading Hotels of the World
- Swiss Deluxe Hotels

CONTACT

Riffelalp Resort 2222 m
 CH-3920 Zermatt, Switzerland
 T. +41 27 966 05 55
 F. +41 27 966 05 50
reservation@riffelalp.com
www.riffelalp.com

